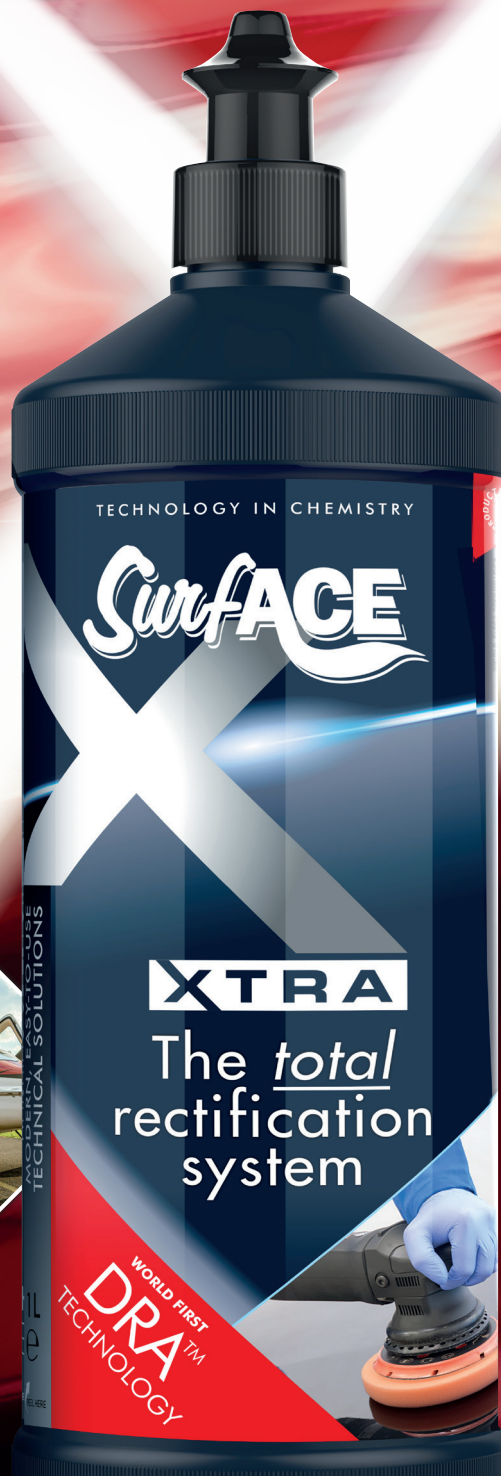


TECHNOLOGY IN CHEMISTRY

# Surface<sup>®</sup>



## The total paint rectification solution



*Automotive  
Marine  
Aviation  
Industry*

# The total rectification system...

## Contents

2-Step Surf-ACE Compound System and pad selection	4
Other Compounds	6
Preparation	7
Decontamination	7
Inspection & Finishing	8
Protection	8
Pads range	9
Microfibre cloths/towels	10
Merchandise	11

Surf-ACE compounds feature unique, **world-first, DRA™** (Dynamic Response Abrasion) **technology** incorporating specially shaped micro-precision oxides.

Used in conjunction with appropriate Surf-ACE pads, the latest Surf-ACE XTRA Compounds provide a modern, easy-to-use technical solution to all paintwork problems across a range of industries.



- **Automotive**
- **Marine**
- **Furniture**
- **Industrial**
- **Aircraft**

Surf-ACE XTRA range now available in 250ml pack size



In a fiercely competitive market dominated by 3M and Fastcut plus for so many years, it is great to have a product range which more than competes in the automotive, marine and furniture industries to meet our customer expectations.

As a company, since switching from 3M to Surf-ACE products, we have not only retained our customers who were sceptical initially but have also moved forward and won new business.

Fantastic products strengthened by very knowledgeable technical support.

**Krzysztof Chmielewski**  
M&ST Sp. z o.o  
Warsaw



What our customers love most is the simplicity and the short time it takes to remove scratches, even deep ones, plus the perfect gloss finish. Our sales agents also love how easy it is to sell it because it can work with almost all machines and pads, you don't need to turn down the customer because he does not have the correct equipment.

**Elías Bergsson**  
Málningarvörur  
Iceland



In a market where time is money it was a relief to be introduced to the Surf-ACE Paint

Corrections System after trying many of the different brands on the market and, due to the products containing fillers, being very disappointed with the results 2/3 days after application.

Finally great to have a product range which delivers and performs consistently well on scratch removal and finish with no need to re-work on Gelcoats and paintwork.

In the marine sector travelling the globe to service and maintain luxury yachts for the UK's number one luxury yacht manufacturer the Surf-ACE Paint Correction System is the one we know and trust to deliver on our expectations and that of our customers.

The Surf-ACE Brand is backed by excellent technical support.

**Chris Sharpe**  
Senior Paintshop Manager  
Yacht Solutions  
Plymouth



WORLD FIRST  
**DRA™**  
TECHNOLOGY\*



The ultimate paint correction combination, quickly and easily removes paintwork and gelcoat imperfections, random deep scratches and heavy oxidation in the shortest possible time delivering a unique depth of gloss and mirror like finish.

## Contains no fillers or silicones

For use on: All automotive and marine paint systems including water based, UHS, HS, MS and gelcoat, infrared and accelerator cured paints, single component and 2-pack, acrylic, cellulose, synthetic and OEM finishes including Ceramic Clear Coats (Scratch Resistant Clear Coats).

## The total paint rectification solution!

Providing performance based products to the uniquely demanding re-finishing market - in automotive, marine, aircraft and industrial sectors.



Award winning Surf-ACE XTRA products are used by vehicle OEM suppliers on production lines and in crash repair centres throughout Europe. Surf-ACE products are also used in the highly exacting marine and aircraft refinishing market where they prove themselves daily.

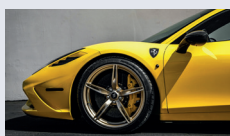


Surf-ACE - a brand which meets the very high standard requirements of our customers in a very competitive automotive repair industry.

P-12XTRA and P-40XTRA; is a simple combination of compounds for scratch removal, swirl removal, high gloss finish with no dropback.

A first class finish. The Surf-ACE Paint correction system has met our customer expectations on all paint systems.

**Steve Paver**  
Business/Technical  
Development Manager  
Allparts Refinishing



We'd like to extend our gratitude to Concept Chemicals for

introducing us to the Surf-ACE range of compounds. Since switching to this range and utilising it's DRA technology, we've seen a tangible increase in productivity and therefore profitability. The speed and effortless cut and refinement from across the range has been a pleasure to work with.

**Chris Benham**  
The Workshop Team  
Heritage Detailing Centre



P-12 XTRA - where do I start - absolute fantastic compound, I've gone from

using Farecla and 3M to just P-12 XTRA. It cuts from 3000 grit no problem, with minimal effort leaving a great finish with no holograms and minimal drop back. It leaves no dust behind but also doesn't leave a layer of grease behind like most other compounds.

**Slicked Detailing**  
Manchester

## Surf-ACE Scratch Gone... Finish On Trial Pack

A simple way to try Surf-ACE P-12XTRA and P-40 XTRA and see for yourself how effective the two-step system is.

...giving you Xtra!



**Surf-ACE®**  
TECHNOLOGY IN CHEMISTRY

# The total rectification system...

## 2-STEP PROC

### P-12XTRA HEAVY CUT COMPOUND

- Quickly and easily removes paintwork/gelcoat imperfections, random deep scratches and heavy oxidation in the shortest time to deliver a unique depth of gloss and mirror like finish.
- Quick and easy clean-up.
- Guarantees minimal drop-back on dark colours.

### Scratch Remover



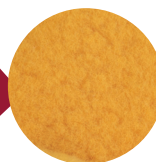
Heavy Scratches/Oxidation or P1200 Sanding Marks

or

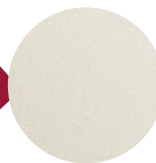
P1500 - P3000 Sanding Marks /Fresh Paint

or

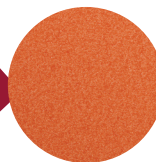
Swirl Removal and Finish on Lighter Colours



XC-15  
Gold  
Micro-  
wool



P-15  
White  
Foam



P-30  
Orange  
Foam

#713: 250ml, 1 kilo, 2 x 100g product trial pack: #740000

### Automotive



### Marine





# CESS SYSTEM

## P-40XTRA ULTRA-FINE FINISHING GLAZE

- A specially formulated ultra-fine compound engineered for final finish polishing to remove hologram, swirls and light defects.
- Easy to apply, quick to buff, fast to clean.
- Delivers a superb high gloss finish with no greasy/smearing problems, minimal drop-back.

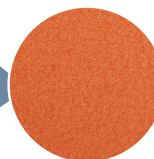
### Finishing Glaze



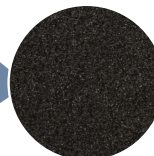
Swirl Removal



Light Swirl/ Hologram Removal



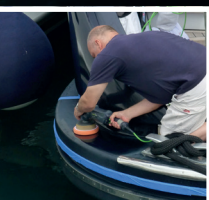
P-30  
Orange  
Foam



P-40  
Black  
Foam

#711: 250ml, 1 kilo, 2 x 100g product trial pack: #740000

### Aviation



### Industry



# The total rectification system...



## ALL-IN-ONE PRODUCTS

### ...GIVING YOU XTRA!

#### P-15 XTRA

Achieves outstanding levels of finish all in one action. Removes oxidation, moderate scratches, swirl-marks and holograms to deliver colour restoration to a mirror like deep gloss finish. Use with Lambswool, Orange and Black Foam pads. For automotive, RV's, caravans, and leisure boats.

**Part #710:** 1kg, 250ml

#### P-60 XTRA

Silicone free. One-step finishing compound incorporating DRA™ Technology with Montan wax, removes moderate to light defects whilst adding deep gloss wax protection. Corrects P4000/P6000 abrasive equivalents.

**Part #427:** 1L, 250ml

## BUDGET RANGE

### LIQUID COMPOUNDS

#### P-15

Originally designed to be used on MS-paints, use P-15 for permanent removal of scratches up to P1200 depth. Use with White foam mop for removal of P1500 scratches.

**Part #70005:** 1Kg

#### P-30

Use with Lambswool mop for permanent removal of P1500/P2000 scratches. Use Orange foam mop for quick and permanent removal of scratches up to P3000 depth. Use with Black foam mop for removal of P4000 scratches.

**Part #70021:** 1Kg

### PASTE COMPOUND

#### Easi-Cut

Outstanding scratch removal and high gloss finish on all paint types – new or old. Quick to clean up. Leaves a high clarity, deep gloss shine. Wide variety of paint rectification applications; bodyshop, detailers, new/used car retailers, industrial, furniture, marine etc. Works with most types of polishing foam mops or for greater cut can be used use with lambswool buffing pads.

**Part #40003:** 1.2Kg, 3Kg





## PREPARATION



### Panel-Prep

Super-efficient cleaner for surface preparation. Removes grease, oils, silicones, waxes, dirt and other surface contaminants from metal and plastic substrates prior to painting. Reduces static build-up. Incorporates a biodegradable "green solvent".

**Part #ZIR50305:** 1L, 5L

### M'n'M

Triple action matting/flatting paste. Abrades, cleans and degreases in one easy-glide foaming action to ensure consistency and uniformity of matted surface. Boosts new paint adhesion. Minimises reappearance of scratches and tramlines through clearcoat.

**Part #70008:** 3kg, 500gm



### Flat-Matt

One-step, water based abrasive cleaning and prep system for use on all paint finishes. Ideal for difficult areas such as bumpers, door sills and for the blending-in of new paint.

**Part #70006:** 1kg, 500gm



## DE-CONTAMINATION

### Clay Bar

Problem solving cleaning bar to remove industrial fall-out, paint overspray, tree sap residues etc. from paintwork, glass, plastics, chrome. Saves time. Easy and safe to use.

**Part #13408:** 200gm

### Clay-2-Go Lube

For lubricating surfaces whilst removing surface contamination through the claying process (clay bar, clay pad, clay towel).

**Part #90405:** 5L



# The total rectification system...

## INSPECTION & FINISHING

### Spray & Finish

Bodyshop safe formula for cleaning and complete removal of compound residues, light dirt, water spots from paint, glass and plastic surfaces. Speeds up work process. Brightens paintwork giving greater gloss and depth of shine to paint finishes.

**Part #487:** 1L, 5L

### Spray Shield

Spray, wipe and easy-buff coating for fast protection of all solid surfaces: paintwork, plastics, laminate and glass. Does not alter the sheen of the item being coated: Wet look coatings are sealed with improved gloss levels. Matt lacquers stay matt. Dries in seconds, can be over-painted without adhesion loss or lacquer film distortion.

**Part #716:** 1L

## PROTECTION

### P-60 XTRA

Silicone free. One-step finishing compound incorporating DRA™ Technology with Montan wax, removes moderate to light defects whilst adding deep gloss wax protection. Corrects P4000/P6000 abrasive equivalents.

**Part #427:** 1kg, 250ml

### Infinity Nano Polish

Super High Gloss Polish with "lotus-leaf effect" nano technology for all modern finishes including ceramic clear coats. Polished surfaces resist dirt making surface easier to clean. Incredible wet paint gloss effect.

**Part #461:** 1L, 5L

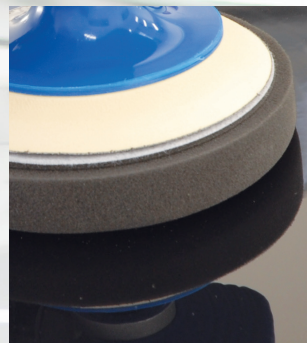
### Ovation Resin Wax Polish

Used to add a long life wax protection to the compounded paint surface. Easy to apply and buff off, Ovation enhances paint gloss clarity and depth of shine. Very low chalk

**Part #961:** 1L, 5L







### P-15 White Compound Foam

#90017: 80x25mm  
#89910: 150x25mm  
#89912: 165x30mm  
#90023: 175x25mm



Medium/coarse compounding foam. Use for removing deeper scratches from harder/aged lacquers. Durable and long-lasting polishing action.

### P-30 Orange Swirl Remover Foam

#90025: 80x25mm  
#90024: 150x25mm  
#90027: 165x30mm  
#90023: 175x25mm



Swirl removing fine compounding foam.

### P-40 Black Finishing Foam

#MMB33009: 80x30mm  
#91211: 150x30mm  
#91213: 165x30mm  
#MB33003: 175x25mm



Ultra-fine and soft polishing foam removes holograms, will not create swirls and leaves a mirror finish to any paintwork.

### Fast-Fix Backing Plates

#B22204: Mini 73x14mm  
#B22203: Maxi 112x14mm  
#91104: Reg 138x14mm  
#B22202: Super 156x14mm

Chamfered edge for easy peel without damage to pad. Backing plate fits exactly to the area of Fast-Fix to ensure easy centring of the pad.



### XC-15 Gold Micro-Wool Pad

#90015: 80x25mm  
#90014: 150x25mm  
#90026: 180x25mm



Delivers the speed of cut of a conventional lambswool pad without the creating micro scratches and swirls. Effortlessly removes deeper scratches (P1500) and leaves a high gloss finish.



- 1 **Gold Micro-Wool** pad incorporates a flexible durable interface pad which is adhered to the wool without the need for stitching, giving it greater flexibility on contoured surface areas.
- 2 The flexibility and washability of the **Gold Micro-Wool** lends itself to increasing pad life and offers a reduction in the induction of heavier swirl marks due to twisted knotted wool fibres.
- 3 The **Gold Micro-Wool** is more aggressive than conventional wools and delivers an increased level of scratch removal on harder clearcoat substrates.



### Merino Lambswool Pad

#90016: 80x22mm  
#90013: 150x22mm  
#90012: 180x22mm



A pure 100% Merino natural lambswool for elimination of P1500 or finer scratch marks. Super-fast cutting action. Highly durable and washable.



### Superbuff Double-Sided Wool Mop

#91108: 8 inch

Double-sided, deep pile lambswool heavy-cut pad. For fast renovation of larger areas of painted surfaces in automotive and marine applications. To use with 14mm thread polishing machines, order adaptor #91109.



# Microfibre cloths



## #0225/0225200

### MICRO-ACE POLISHING CLOTH - **BLUE**

Packs: 10 x 3 printed bags (30 cloths),  
or Bulk 20 packs of 10 cloths [200 cloths].

**SPECIFICATION:** • 40 x 40cm • 350gsm • 80% Polyester/20% Polyamide • Warp knitting  
• Radius corners and no wash label- to avoid scratching paint surfaces.

**APPLICATION:** Professional weight cloth. For fast/enhanced cleaning and polishing action.  
The *professional-trade standard* for detailers, waterless cleaning & polishing and body-shops.

## #0227200:

### CAP-4 MICROFIBRE POLISHING CLOTH - **GREEN**

Bulk 20 packs of 10 cloths  
[200 cloths]

All Surf-ACE  
microfibre cloths  
and towels  
are washable  
up to 40°C  
and withstand  
repeated  
wash cycles  
for maximum  
economy.



## #0214:

### ARID DRYING TOWEL - **Red**

Packs: 25 Towels per carton, individually bagged

**SPECIFICATION:** • 50 x 80cm • 1400gsm • 80% Polyester/20% Polyamide • Dual layered twisted loop • Edgeless - no wash label- avoids scratching paint surfaces.

**APPLICATION:** The perfect professional, single-sweep, de-watering/drying towel. Maintains adequate friction to the surface without sticking



## #ZIR049/ZIR049300

### SUPER-ZIRCONITE MICROFIBRE CLOTHS - **TURQUOISE**

Packs: 10 x 2 bags (20 cloths), or  
Bulk 150 packs of 2 cloths [300 cloths]

**SPECIFICATION:** • 40 x 40cm • 340gsm • 80% Polyester/20% Polyamide • Weft knitting • Radius corners - narrow edge sewing and no wash label- to avoid scratching paint surfaces.

**APPLICATION:** Superfine Weft weave for high absorbency, specially structured for final polishing of all ZIRCONITE Coatings: Ceramic/Glass/Quartz/Nano.



## CLEANING AND DETAILING

INSIDE & OUT!		BODYSHOP SAFE PRODUCTS THAT TRULY PERFORM					
EXTERIOR CLEANING	Wheels		Super Alloy #110 ACB		Conquest #112 NON-ACB		
	All surfaces		Delta Floor Plus+ #13112		Delta Floor Nano #13121		Delta Floor 2000 #1100
BODYWORK	Bodywork		Profile Wash & Wax #142				
	INTERIOR CLEANING		3C #214		Master Cleaner #212		
Glass	Plastics, Fabric Carpets, Trim		Squeezy #225				
	INTERIOR CONDITIONING		Panache #591				
EXTERIOR CONDITIONING	Cockpit Trim		Infinity #441		Easi-Wax #410		
	Paintwork polishing		PER Special #441				
Plastics			Outline #148		Drive #143		
	Tyres		Water Based #1450		Solvent Based #1451		
FINAL INSPECTION	Check & Finish		Floor Mats #5001				

Setting the standards...

## Silicone Free Bodyshop Cleaning and Detailing Program... *the perfect finish*

Free wall poster featuring all the products you need for total customer satisfaction. Size 594 x 420mm

## ADDED PROFIT OPPORTUNITIES

**Zirconite Exterior Protection**

ZQ9h	Nano Glaze	ZC-Boosta	ZQ-365	Bead-Magic	ZQS Alloy
Polyisilane	PIFE	Polyisilone & Polyisilane fluoro	Glyphane Infused Coating	Polyisilane	Polyisilane

**Zirconite Interior Protection**

Leather Shield	Fabric Protector
Fluoropolymer superrepellent	Fluoro-polymer CFC free

**EXTERIOR | INTERIOR**  
**ZIRCONITE®**  
PROTECTION SYSTEM

**EXTERIOR | INTERIOR**  
**ZIRCONITE**  
PROTECTION SYSTEM  
**CONCEPT**  
BY HYDROX

Since 1987

Surface science nano-coatings for total protection

One-Step Flamed Coat - Permanent / 25 Litre application for complete invisible finish.

Vehicle interior after some minutes drying!

**QUARTZ SHIM COATING ZQ9h**

**QUARTZ RIM COATING ZQ5**

**ZC-365**

## Zirconite Protective Coatings

Giving you fast and easy profit opportunities for upselling a variety of coatings for paintwork, wheels, leather and fabric. Pick up a brochure now.

## MERCHANDISE



- 1 Surf-ACE Apron**  
Bib style aprons with front pocket (split into 2). Navy Blue 350gsm 100% Cotton. Printed 2 colours.  
**#0150/Surf-ACE**

- 2 Surf-ACE Polo**  
Embroidered logo on left breast. 50% Polyester  
50% Cotton Navy Blue, knitted raised collar &  
cuffs, taped neck, taped side vents with extended  
back. Self coloured 3 button placket. Washable  
at 60 degrees. Small, Medium, large, XL  
**#0137/Surf-ACE**

- 3 Surf-ACE Fleece**  
Embroidered logo on left breast. Made from 250 series anti-pill symmetry fleece. Short 1/4 zip and in a pullover style, fleece cuffs, two zipped lower pockets and an adjustable shockcord hem. Medium, Large, XL  
**#0143/Surf-ACE**

- 4 Surf-ACE**  
**Beanie Hat**  
Embroidered logo on front. Classic winter beanie hat with a wide turn up. 100% soft feel acrylic with embroidered logo. Colour: Black. One size fits all.  
**#0147/Surf-ACE**

- 5 Surf-ACE  
Bodywarmer**  
Embroidered Surf-ACE  
logo on back. Nylon  
rip-stop outer, zipped  
handwarmer pockets.  
Thermofort insulation  
Colour: Black. Medium,  
Large, XL  
**#0136/Surf-ACE**

- 6 Surf-ACE Pen**  
Soft touch rubber coating on the aluminium barrel provides a silky feel and comfortable grip. Aluminium construction makes this pen just the right weight for smooth writing.

...the power to achieve

Concept Chemicals & Coatings Limited.

Felt Court, Windmill Lane Industrial Estate,  
Denton, Manchester M34 3RB England

Tw: +44 (0)161 335 0213



Concept Chemicals & Coatings EU Limited.

The Gallery, 13 Bedford Row, Limerick,  
V94 VY47 Ireland

T: +353 (0)615 41860



CONCEPT CHEMICALS  
& COATINGS USA LLC

5200 Anthony Road, Sandston,  
VA 23150 USA.

T: +1 (0) 213 996 8482



[www.conceptchemicals.com](http://www.conceptchemicals.com) Email: [sales@conceptchemicals.com](mailto:sales@conceptchemicals.com)



*With a policy of continuous innovation and product development, Concept Chemicals & Coatings Ltd reserves the right to alter the specification of any of its products without prior notice.*



© Copyright Concept Chemicals & Coatings Ltd 2022

The Surf-ACE brand and the products within the brand are  
protected marks of Concept Chemicals & Coatings Ltd.  
© Concept Chemicals & Coatings Ltd 2022.



The total paint rectification solution

**SurfACE**®